



Operating Manual

SUPER-GEHRFIX II - Cross-Cut & Mitre Fence

for PANHANS Sliding Table Saws 690 Series and Type V91



Type:	SUPER-GEHRFIX II
For Sliding Table Saws:	690 100 690 200 V91
Article No.:	4303

HOKUBEMA Maschinenbau GmbH

Graf-Stauffenberg-Kaserne, Binger Str. 28 | Halle 120

DE 72488 Sigmaringen | Tel. +49 07571 755-0

E-Mail: info@hokubema-panhans.de | Web: <https://hokubema-panhans.de>

Table of Contents

1	Functional Description	3
1.1	Features	3
1.2	Components & Overview.....	3
1.3	Calibrate Super Gehrfix II.....	4
1.4	Attach Cross-Cut Fence.....	4
1.5	Set Length > 1885 mm	4
1.6	Set Angle to 90 Degrees	4
1.7	Setting Degrees & Intermediate Degrees.....	4
1.8	Changing Parameters of the Digital Indicator	5
1.9	Auxiliary Mitre Fence for Super-Gehrfix.....	6
1.9.1	Operating the Auxiliary Mitre Fence	6

List of Figures

Figure 1: Super Gehrfix I overview	3
Figure 3: Cross-cut fence.....	4
Figure 4: Auxiliary mitre fence	6
Figure 5: Operating the auxiliary mitre fence	6

Revisions

Revision	Autor	Revision	Date
0	AG	German original translated	17.02.2022

1 Functional Description

The combined cross-cut fence and mitre fence "Super-Gehrfix II" enables precise angular cuts from 45° to 135° without changing the dimension set on the cross-cut fence. The angle is set via a digital indicator and the automatic length compensation via a grid curve made of stainless steel.

	<p>To use the Super-Gehrfix I it is mandatory to use a saw blade with a thickness of 3.2 mm.</p>
---	---

1.1 Features

- Allows infinite adjustment of the mitre angle
- Battery-operated digital indicator included
- Infinitely adjustable and readable to 0.1
- Fixing points for 90° angles at the front and rear of the cross slide
- Automatic length compensation via grid curve
- Setting accuracy: 1/100°
- Can be combined with the standard cross-cut fence or the optional Tele-Digit

1.2 Components & Overview

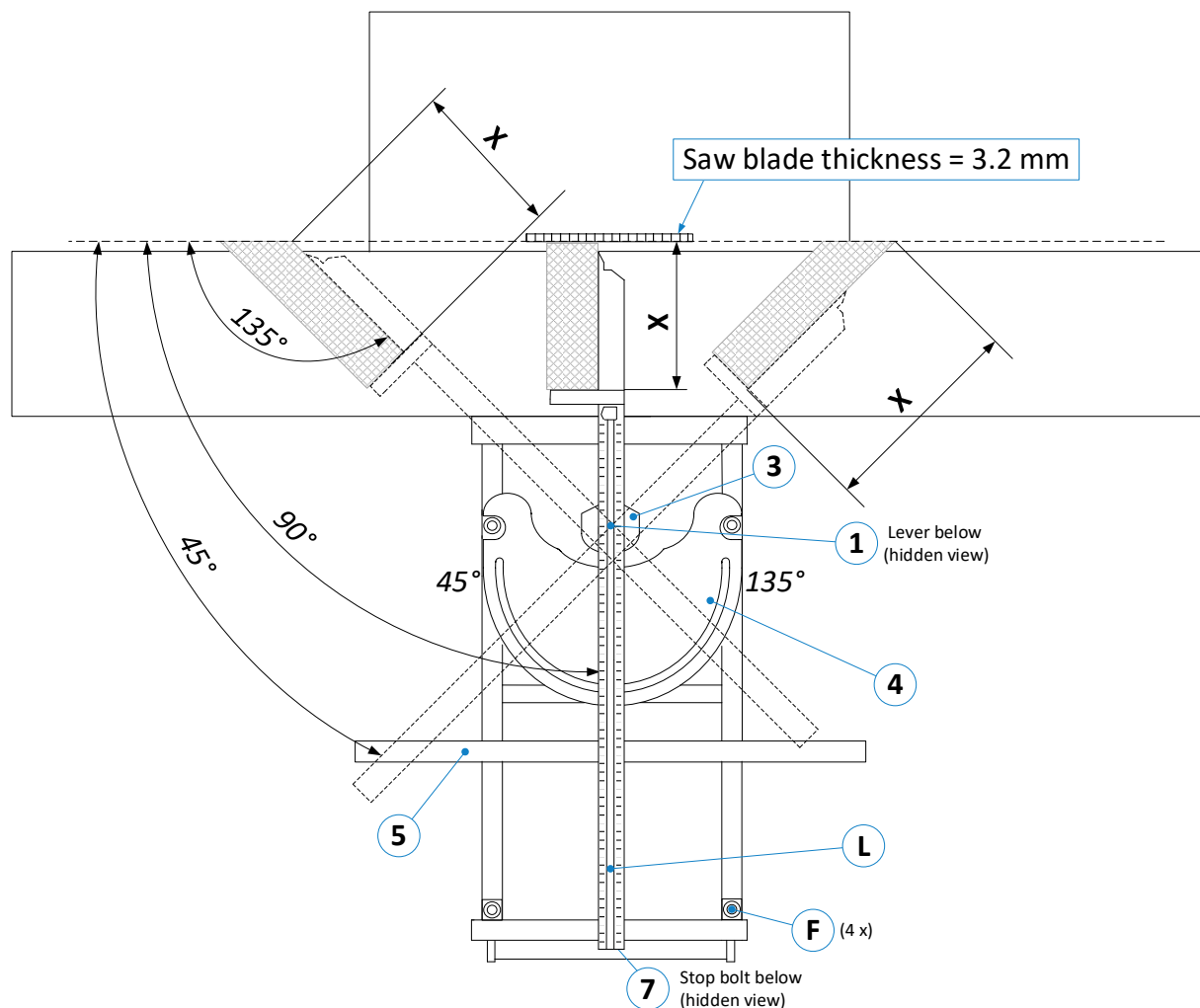



Figure 1: Super Gehrfix I overview

1.3 Calibrate Super Gehrfix II

To calibrate the Super-Gehrfix II, it must first be positioned at 90° using the stop bolt (7) as shown in the illustration above. Then press the button  on the digital display to complete the calibration procedure.

➔ After successful calibration, the value 0.00° appears in the digital display.

1.4 Attach Cross-Cut Fence

- Tighten the clamping lever (1) on the cross-cut fence (L) to fix the fixture.

1.5 Set Length > 1885 mm

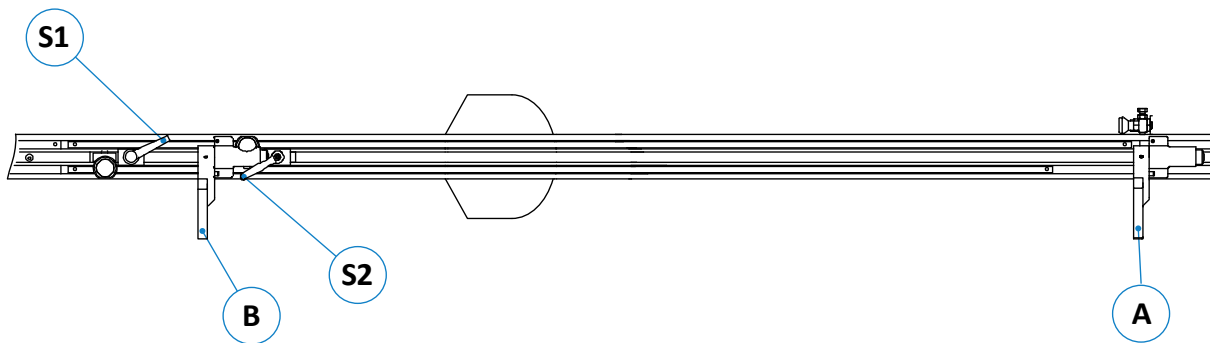


Figure 2: Cross-cut fence


- Loosen flip stop (A) with (S1), set to 1885 mm using magnifying glass and clamp with (S1).
- Loosen flip stop (B) with (S2), move to the desired position and clamp with (S2).

1.6 Set Angle to 90 Degrees

For 90° cuts, the cross-cut fence (L) can be used in different positions:


- Via the fixing points (F) on the left or right of the cross slide. To do this, simply release clamping lever (1) lift off the cross-cut fence (L) completely and insert it into the desired fixing points (F).
- In the center of the cross slide, using the stop bolt (7) for calibration (procedure see section ⇨ 1.5).

1.7 Setting Degrees & Intermediate Degrees

	<i>For mitre cuts, the cross-cut fence (L) must always rest on the support rail (5) .</i>
---	--

- Loosen the clamping lever (1).
- Then turn the cross-cut fence (L) and set to the desired angle via the digital display.
- Tighten the clamping lever (1) again.

1.8 Changing Parameters of the Digital Indicator

- Press button **P** until parameter “**AUFL**” appears.
- Press button **↑** to scroll through the parameters until the parameter to be changed appears.
- Using the arrow keys, enter the parameters according to the parameter table (see below) and confirm by pressing button **+**.
- Press **P** a total of 15 times until the parameters have been exited.
-  **Switch the unit off and on again so that the changes are applied!**

<i>Display</i>	<i>Designation / Value Range</i>	<i>Basic Setting</i>	<i>PANHANS Setting</i>
AuFL	Resolution (mm, In = Inch) 1, 0.1, 0.05, In 0.01, In 0.001, FrEI, 1/16in, 1/32in, 1/64in	0.1	FrEI
FAc	Multiplicator (only with resolution “FrEI”) 0.0000 ... 9.99999	0.00000	Standard 0.57160
dP	Decimal places (only with resolution “FrEI”) 0 ... 0.000	0.00	0.00
rEF	Reference value -99999 ... (+)99999	00000.0	
oFS	Offsetwert -99999 ... (+)99999	00000.0	
ZAEHL	Counting direction UP, DOWN	UP	
Auto	Switch-off type OFF, ON	OFF	OFF
PEriod	Switch-off time (in hours) (only with switch-off type = ON) 0.2, 0.5, 1.0, 2.0, 4.0, 8.0	0.2	
ISP	Actual value memory ON, OFF	OFF	OFF
4_off	Switch off delay ON, OFF	OFF	OFF
F_ABS	Enable reset function ON, OFF	ON	ON
F_REL	Enable incremental mode ON, OFF	OFF	OFF
F_REF	Enable change of reference value ON, OFF	OFF	OFF
F_OFS	Enable change of offset value ON, OFF	OFF	OFF
SPR	Language (D = German / E = English)	D	D

More details about the unit on  <https://www.siko-global.com/en-de/service-downloads/download-products?A=detail&id=1440>

1.9 Auxiliary Mitre Fence for Super-Gehrfix



Figure 3: Auxiliary mitre fence

The auxiliary mitre fence is an additional fence to the existing cross-cut fence. It can be combined with the Super Gehrfix II and allows easy adjustment of the length when producing acute and obtuse angles.

The device is used to stop and cut mitres to length without damage and has an adjustable angle and a fixed offset of 100 mm to the flip stop.

By using this auxiliary fence, the length dimension of a workpiece cut at an angle is already automatically correct (exactly as if it would be cut straight at the standard right-angled flip stop).

1.9.1 Operating the Auxiliary Mitre Fence

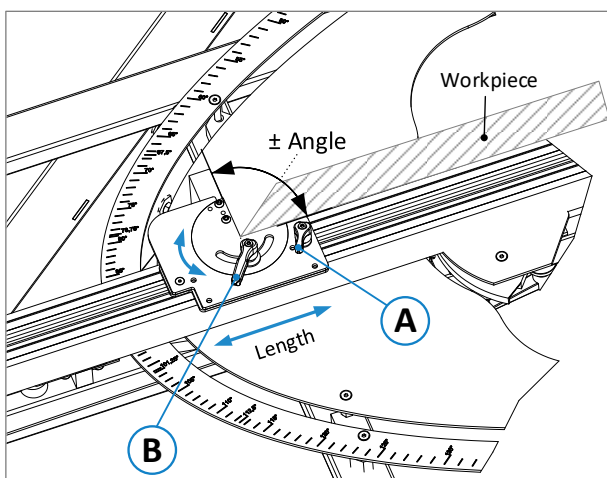


Figure 4: Operating the auxiliary mitre fence

The auxiliary fence has two clamping levers:

1. Clamping lever **(A)** is used to fix the fence in the groove along the guide unit.
2. After loosening clamping lever **(B)**, the device can be rotated to adjust the desired angle of the workpiece.