

TM-200

Electronic Key System for Machine Releases



Product Description

The electronic key system TM-200 allows reliable and secure machine access control at the highest level. The integrated database with CSV export function via the front-side SD card slot enables external processing of all stored data and protocols.

The device, equipped with a real-time clock, enables machine access via 100 tags (keys for 1 administrator and 99 user levels). The parameterization is performed via the integrated RS232 interface, which is connected to an operating system-independent user interface.



Product Features

- Management of up to 100 Tags (1 administrator and 99 user levels)
- RTC real-time clock, data base and CSV export function for SD card included
- 1 digital output (PNP, active high) for administrator access of tag number 5 (e.g. as key switch alternative)
- 4 digital outputs (PNP, active high) for the user tag numbers 1 - 4
- Serial RS232 interface for parametrization via operator surface
- LEDs for status and error messages (in preparation)
- Panel housing (built-on version optionally)
- Relay outputs optionally available on request

Technical Specifications

Power supply:	10 ... 28 VDC
Interface:	RS232 (for parametrization)
Data memory:	SD card
Housing:	panel built-in housing, material: plastic, black
Connections:	12-pin screw terminal, pluggable
Outputs:	1 digital output (PNP, active high), 4 digital outputs optionally
Dimensions:	W x H x D = 72 x 48 x 82.5 mm / 2.83 x 1.89 x 3.25"
Panel cutout:	W x H = 67 x 46 mm / 2.64 x 1.81"
Installation depth:	75.5 mm / 2.97" without connectors
Protection class:	front: IP30* / rear: IP30
Optional built-on housing:	aluminium; W x H x D = 107 x 56 x 110 mm / 4.21 x 2.20 x 4.33"

*) IP65 optionally on request

Beck Kommunikationselektronik

Bodenseeallee 18 | DE 78333 Stockach | Tel.: +49 7771 8068668
E-Mail: mail@beck-electronics.com | Web: www.beck-electronics.com

TM-200

Electronic Key System for Machine Releases



Create Users

This mask is used to create a new user. Users are created and managed via the user interface installed on a PC or notebook, and then stored on the SD card. The data are loaded automatically by inserting the card into the TM-200.

All relevant data as well as the respective authorization level can be stored here.

Max Mustermann 3 ⓘ

Edit record ← back

First name	Authorization	Language
Max	5	EN
Family name	User-Level	Units
Mustermann 3	1	inch
Company	Date of issue:	Machine type
Test LLC	20.05.2017	1
Department - No ..	Last training	Remaining time
Example department	09.07.2017	0
Project - No ..	Working hours	Master key
1234	2	No

⏏

User Overview

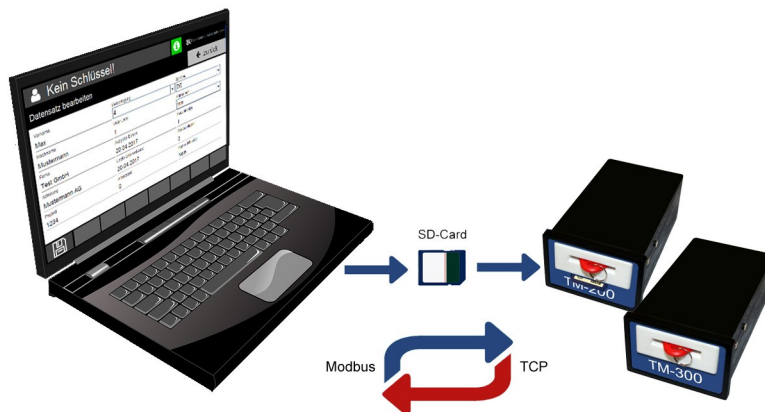
This mask shows an overview of the existing users including the user ID, the respective authorization levels, the working hours spent at the machine, including the date of the respective instructions.

Max Mustermann 3 ⓘ

User Database ↑ ↓

ID	Name	Working hours	Training
2	Max Mustermann 3	5 125 Std.	09.07.2017
3	Max Mustermann 4	3 45231 Std.	15.04.2016
4	Max Mustermann 5	4 56 Std.	28.01.2016
5	Max Mustermann 6	5 128 Std.	03.07.2017
6	Max Mustermann 7	4 256 Std.	15.06.2015
7	Max Mustermann 8	3 512 Std.	29.07.2016
8	Max Mustermann 9	2 1024 Std.	08.01.2018

⏏



Beck Kommunikationselektronik

Bodenseeallee 18 | DE 78333 Stockach | Tel.: +49 7771 8068668
E-Mail: mail@beck-electronics.com | Web: www.beck-electronics.com