



Technical Specifications	Version 245 100	Version 245 200	Version 245 300
Table Size:	1100 x 760 mm	1100 x 760 mm	1100 x 760 mm
Table Height:	870 mm	905 mm	905 mm
Milling Fence Type:	301 (manual adjustment)	301 (manual adjustment)	320 (automatic adjustment)
Ring Fence Type:	1639 Tapoa	1639 Tapoa	1639 Tapoa
Drive Motor:	5.5 kW (7.5 HP)	7.5 kW (10 HP)	7.5 kW (10 HP)
Motor Voltage:	400 VAC / 50 Hz	400 VAC / 50 Hz	400 VAC / 50 Hz
Motor Protection Class:	IP54	IP54	IP54
Motor Brake:	mechanical	electronic, wear-free	electronic, wear-free
Rotating Speed [rpm]:	3000 / 4500 / 6000 / 9000	variable 1500 - 10000	variable 1500 - 10000
Milling Spindle ¹ :	Ø 30 mm	Ø 30 mm	Ø 30 mm
Clamping Height:	140 mm	140	140 mm
Height Adjustment:	125 mm	125 mm	125 mm
Spindle Tilt Range:	-5.0° ... +45.5° ²	-45.5° ... +45.5°	-45.5° ... +45.5°
Positioning Control:	Touchscreen, 2 axes	Touchscreen, 2 axes	Touchscreen, 4 axes
Tool Database:	3 tools, 20 programs each ³	5 tools, 20 programs each ³	500 tools, 100 programs each
Net Weight:	approx. 800 kg	approx. 880 kg	approx. 1050 kg
Connecting Phases:	L1 L2 L3 N PE	L1 L2 L3 N PE	L1 L2 L3 N PE
Supply Cable:	Cu, 5-wire (The cross-section must be determined on site by a qualified electrician!)		
Fuse Protection:	25 A slow	32 A or 35 A slow	32 A or 35 A slow
Suction Nozzles:	2 pieces, Ø 120 mm	2 pieces, Ø 120 mm	2 pieces, Ø 120 mm
Signal Generator Lines for Extraction Unit:	Terminal 13 + 14 on contactor -Q4	Terminal 13 + 14 on contactor -1QA1	Terminal 13 + 14 on contactor -1QA1
Vacuum of Extraction Unit:	on milling fence: 640 Pa under the table: 300 Pa		
Extraction Capacity:	approx. 1450 m ³ /h at 20 m/s (dry chips)		
Space Requirement:	approx. 2700 x 3080 mm (approx. 4000 x 3080 mm with table extensions on both sides)		



- Caution: The regulations of the local EVU apply.
- Checking the impedance of the fault loop and the suitability of the overcurrent protection devices must be carried out at the installation site of the machine.
- The electrical connection may only be carried out by an authorised electrician.
- The circuit diagram can be found in the in the control cabinet.

Emission Values according to prEN 848-1 ⁴

Workplace-related emission levels in dB(A):	67.4 (idle) 82.4 (machining)
Sound power level in dB(A):	79.9 (idle) 88.8 (machining)
Workplace-related dust emission value ^{5 6} :	The determined values comply with the required assessment values for the "GS wood dust test" mark by the German Woodworkers trade association.



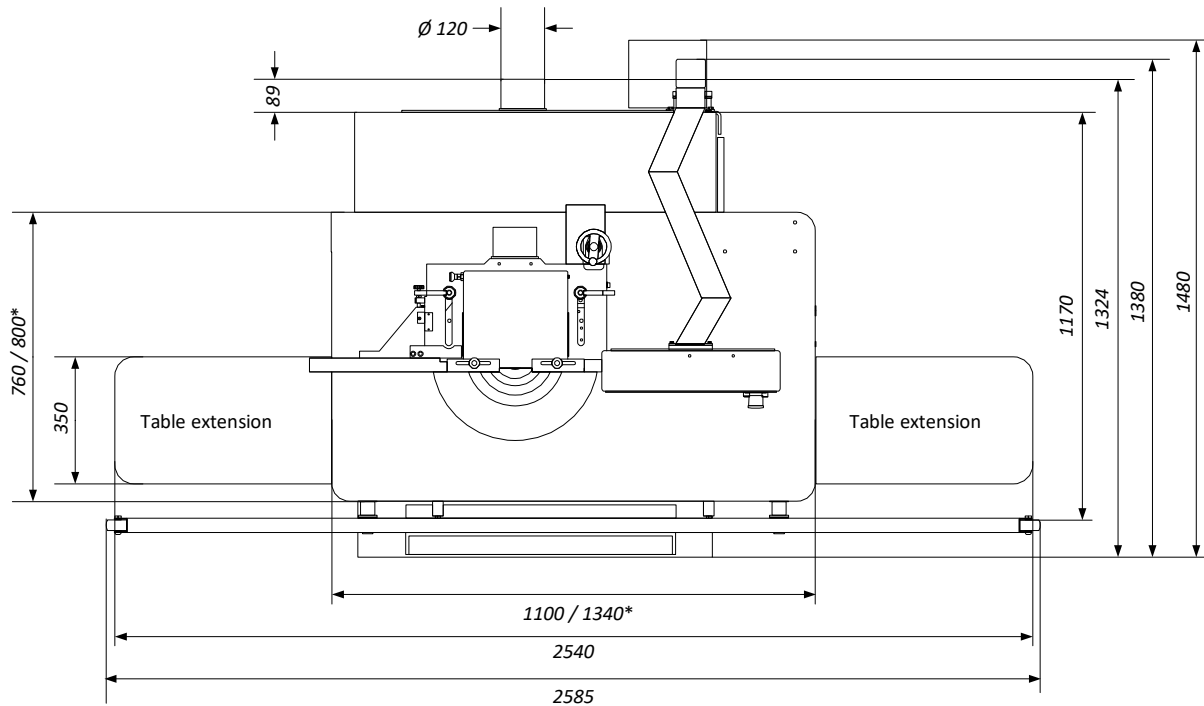
The noise emission values of the machine partly exceed 85 dB(A)!
Therefore, suitable hearing protection must be provided to the personnel!

¹ Milling spindle with quick-action chuck | ² Optionally -45.5° ... +45.5° available | ³ Optionally extendable

⁴ Uncertainty allowance K = 4 dB(A) | ⁵ Permissible: 2.0 mg/m³ air | ⁶ Dust Emission Values: Determined acc. to GS-HO-05

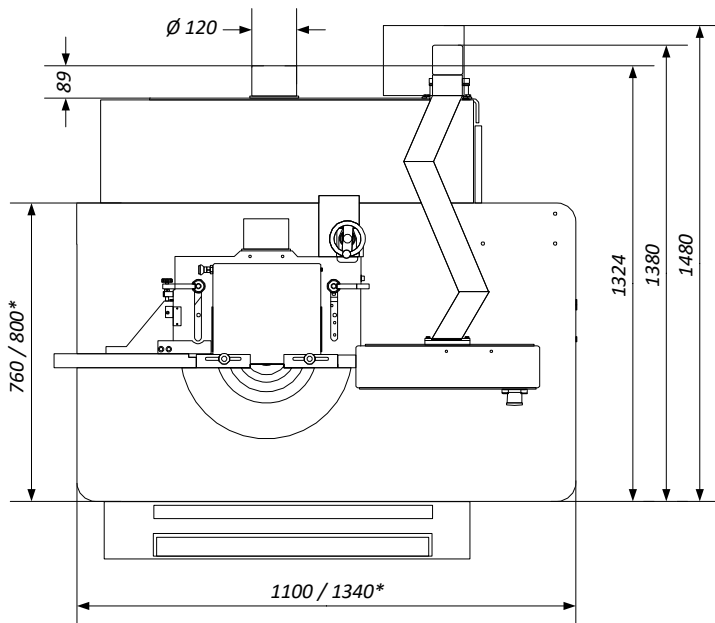
Dimensions

Top view with optional table extensions:



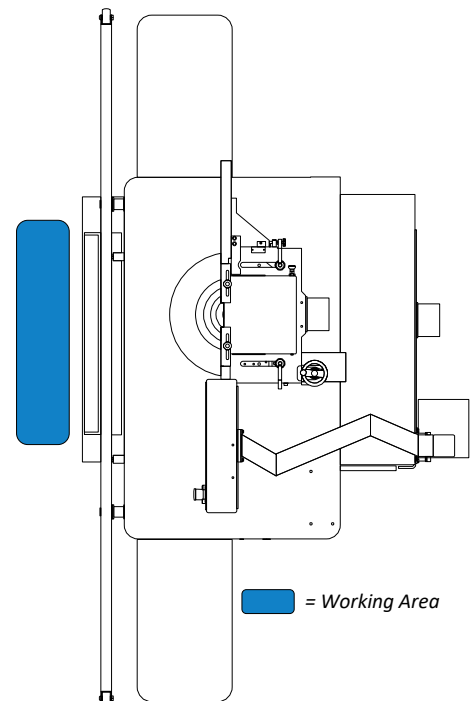
*) Standard table / larger table (option)

Top view with without table extensions (standard):



*) Standard table / larger table (option)

Working Area:



Space requirement: The effective space requirement usually depends on the dimensions of the machine and the dimensions of the workpieces to be machined. In general, provide sufficient space around the machine and also calculate the required workplace for the operating personnel and for the infeed and outfeed of the workpieces.

HOKUBEMA Maschinenbau GmbH

Graf-Stauffenberg-Kaserne, Binger Str. 28 | Halle 120
DE 72488 Sigmaringen (Germany) | Tel. +49 07571 755-0

E-Mail: info@hokubema-panhans.de | Web: <https://hokubema-panhans.de>